

# PROFOLIO™

AMERICAN WOODMARK





# Woodmark knows Pros. ***Rely on the experts.***

We know that every Pro is different, and every Pro project requires different resources. Our versatile cabinetry lines of Hampton Bay, Hampton Bay Designer Series and Woodmark PRO give you the style, prices and construction you need to get your specific job done, and done right.



We also know that two of the most important criteria for you when buying are everyday low prices that do not depend on limited promotions and timing. You know a good deal when you see one, which is why our PROfolio™ program offers one of the best—including a complete line of offerings at exclusive everyday low prices and options for easy delivery.

## **Features of our PROfolio program:**

- Plywood construction available in Woodmark PRO®
- A guaranteed deliver-by date with American Woodmark PROXpress™
- Jobsite delivery
- Volume discounts available
- Best-in-class service

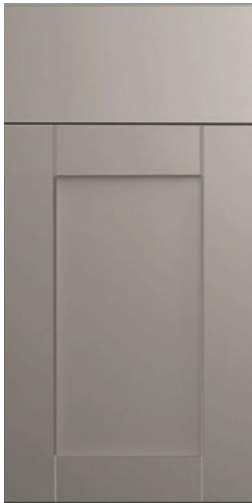




## Shaker



Brindle  
• Full overlay



Dove Gray RTF  
• Full overlay



Java  
• Full overlay



Satin White RTF  
• Full overlay

## Hampton



Cognac  
• Partial overlay



Satin White RTF  
• Full overlay



Medium Oak  
• Partial overlay



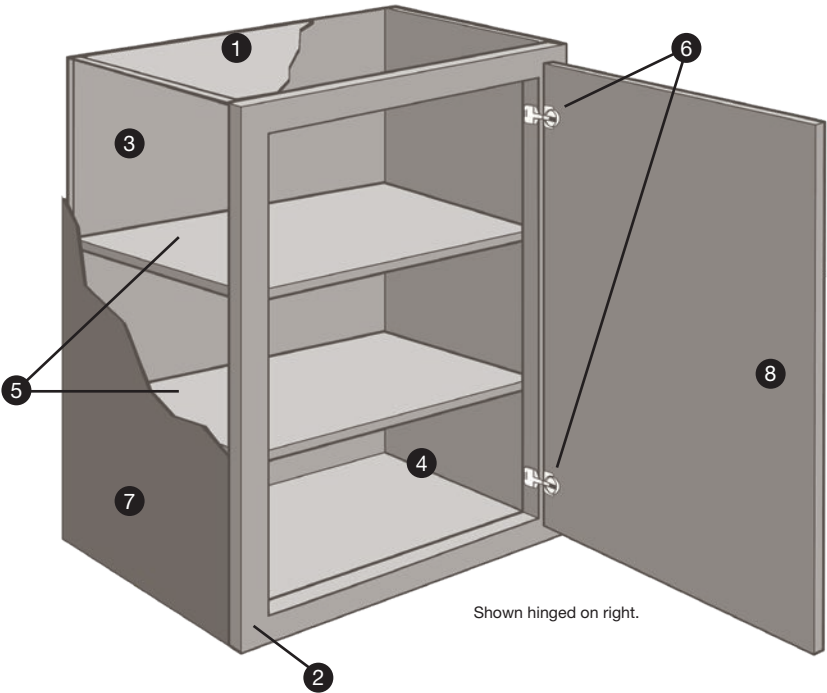
Natural Hickory  
• Partial overlay

## Unfinished



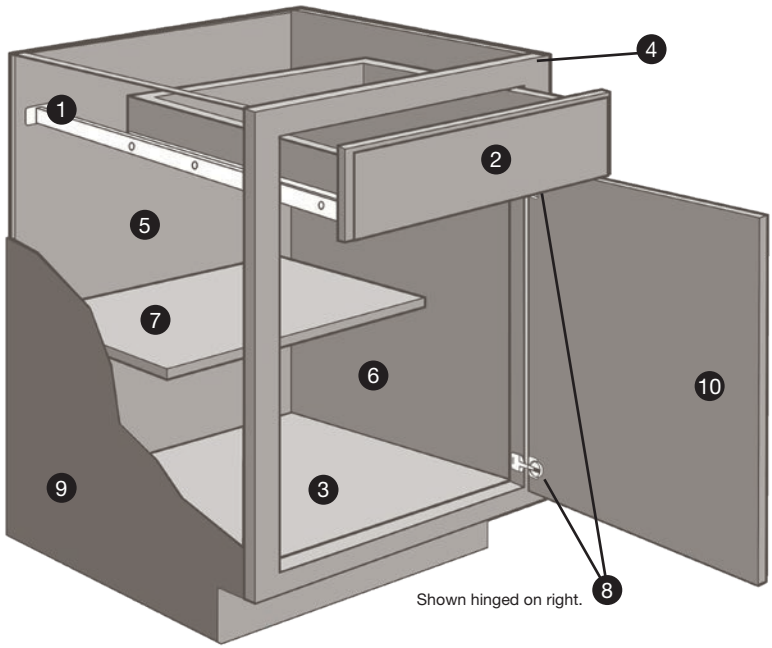
Unfinished  
■ Partial overlay

## Hampton Bay Construction



### Wall Cabinets

- 1 Top/Bottom Panels:** 3/8" engineered wood fully encapsulated in the face frame, back and side panels.
- 2 Face Frame:** Pocket screw construction with 3/4" thick, 1½" wide material.
- 3 Back Panel:** Full 3/8" back panel fully encapsulated into top and bottom panels for strength.
- 4 Interiors:** Natural maple laminate finish on engineered wood.
- 5 Shelves:** 3/4" thick adjustable shelves with metal shelf pins.
- 6 Hinges:** Fully concealed and adjustable.
- 7 End Panels:** Finished cabinetry – 1/2" engineered wood with laminated exterior to match cabinet finish. Unfinished cabinetry – 1/2" engineered wood with raw exterior.
- 8 Door:** Reversible door on single-door cabinets for left or right opening. Hinged on the left from the factory. Double door cabinets are full-access, no center stile.



### Base Cabinets

- 1 Drawer Glides:** Finished cabinetry – Ball-Bearing. Unfinished cabinetry – Epoxy.
- 2 Drawer Box:** Hardwood 4-sided drawer box with fully encapsulated bottom panel.
- 3 Bottom Panels:** 3/8" engineered wood fully encapsulated in the face frame, back and side panels.
- 4 Face Frame:** Pocket screw construction with 3/4" thick, 1½" wide material.
- 5 Back Panel:** Full 3/8" hardboard with a natural maple laminate interior. Sink bases must be cut for plumbing access.
- 6 Interiors:** Natural maple laminate finish on engineered wood.
- 7 Shelf:** 3/4" thick adjustable half-depth shelf.
- 8 Hinges:** Fully concealed and adjustable.
- 9 End Panels:** Finished cabinetry – 1/2" engineered wood with laminated exterior to match cabinet finish. Unfinished cabinetry – 1/2" engineered wood with raw exterior.
- 10 Door:** Reversible door on single-door cabinets for left or right opening. Hinged on the left from the factory. Double door cabinets are full-access, no center stile.

# Hampton Bay Designer Series Collections

Gretna



Espresso

• Frameless construction

Edgeley



White

• Frameless construction



Glacier

• Frameless construction



Driftwood


• Frameless construction



Thunder


• Frameless construction

Elgin



White


• Frameless construction



Heron Gray


• Frameless construction

Melvern



White

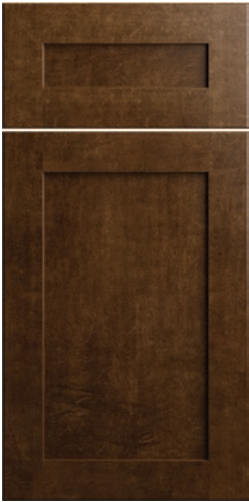
• Frameless construction



Heron Gray

• Frameless construction

Soleste



Spice

• Frameless construction

## Hampton Bay Designer Series Accessories



Standard Brushed Nickel Knob

AHK1-BN



Gallery Brushed Nickel Pull

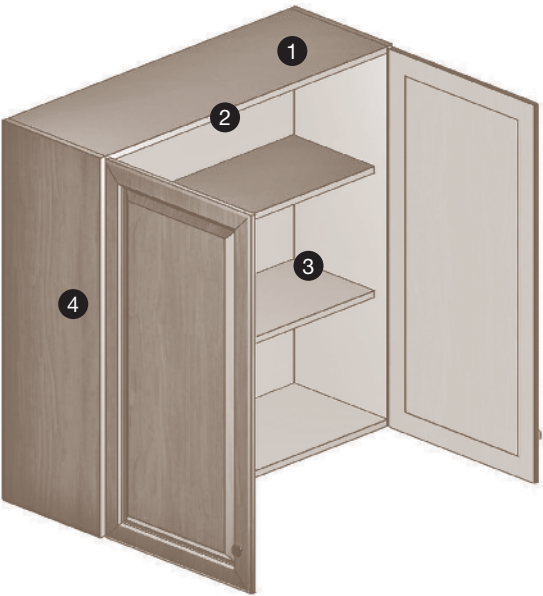
AHP13.5-BN  
AHP13.12-BN



Square Brushed Nickel Pull

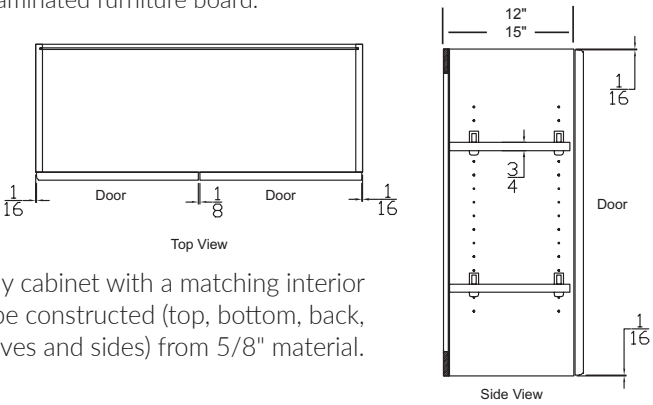
AHP14-BN

## Hampton Bay Designer Series Construction



### Wall Cabinets

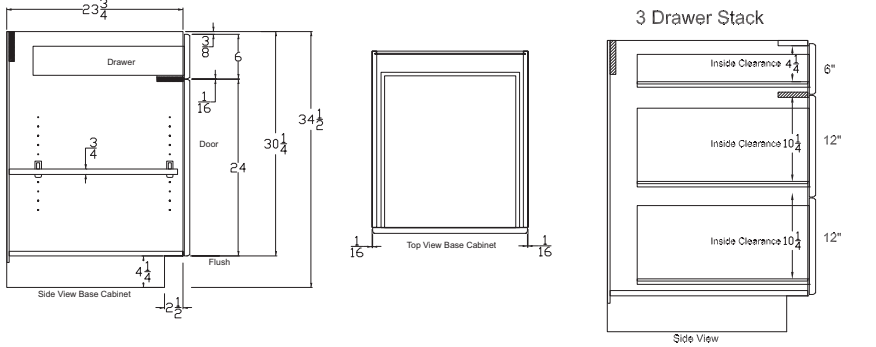
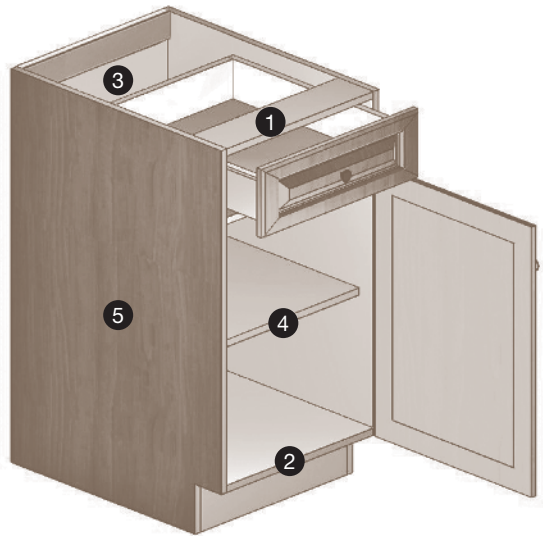
- 1 **Top/Bottom Panels:** 3/4" laminated furniture board.
- 2 **Back Panel:** 1/4" laminated furniture board with 4" x 1/2" concealed furniture board mounting rails top and bottom. Cabinets 36" and wider will be drilled for center shelf supports.
- 3 **Shelves:** Fully adjustable 3/4" laminated furniture board. Cabinets 21" tall and shorter do not include adjustable shelves. Cabinets 24" tall include one shelf and two hinges. Cabinets 30" and 36" tall include two adjustable shelves and two hinges. Cabinets 42" tall include three adjustable shelves and three hinges.
- 4 **End Panels:** 5/8" laminated furniture board.



**Note:** Any cabinet with a matching interior will be constructed (top, bottom, back, shelves and sides) from 5/8" material.


### Base Cabinets

- 1 **Top Panel:** 5/8" plywood rails.
- 2 **Bottom Panel:** 5/8" laminated furniture board.
- 3 **Back Panel:** 1/4" laminated furniture board with 4" x 5/8" plywood mounting rail.
- 4 **Shelf:** Fully adjustable 3/4" laminated furniture board.
- 5 **End Panels:** 5/8" laminated furniture board.







# Woodmark PRO Collections

**Leesburg<sup>®</sup>**  



- Full overlay, with 2-1/4" frame
- Recessed shaker panel\*

**Ashland<sup>®</sup>**  


- Partial overlay
- Recessed panel\*

**Reading<sup>®</sup>**  


- Full overlay, with 3" frame
- Recessed shaker panel\*

**MacArthur<sup>®</sup>**  


- Full overlay mitered
- Recessed panel\*

**Shorebrook<sup>®</sup>**  


- Full overlay
- Recessed beadboard panel\*

**Portola<sup>®</sup>**  


- Full overlay
- Raised panel\*

**Hanover<sup>®</sup>**  


- Full overlay
- Slab veneer panel with solid wood edge banding

**Savannah<sup>®</sup>**  


- Full overlay mitered
- Raised panel\*

**Brookland<sup>®</sup>**  


- Full overlay mitered
- RBV recessed panel

**Portland<sup>®</sup>**  


- Partial overlay
- Raised panel

**Westerly**  


- Full Overlay
- Raised Panel Doors
- Slab Drawer Fronts

**Del Ray<sup>®</sup>**  


- Full overlay, with 3" frame
- Recessed shaker panel\*
- Cascading top and bottom rails

**Garner<sup>®</sup>**  


- Full overlay mitered
- Recessed Panel\*

**Glen Ellen<sup>®</sup>**  


- Partial overlay mitered
- Recessed panel
- Only available in Duraform

**San Mateo<sup>®</sup>**  


- Partial overlay
- Recessed shaker panel
- Only available in Duraform

## Woodmark PRO Best Selling Accessories

\*Painted finishes may blend engineered and natural materials for a more consistent product.

### Sculpted Knobs & Pulls

**Polished Chrome**  


PULL 4302PC



KNOB 4303PC

**Satin Nickel**  


PULL 4302SN



KNOB 4303SN

**Brushed Tin**  


PULL 4302BT



KNOB 4303BT

**Verona Bronze**  


PULL 4302VB



KNOB 4303VB

### Rope Knobs & Flat Contour Pulls

**Satin Nickel**  


PULL 3230SN



KNOB 3231SN

**Weathered Nickel**  


PULL 3230WN



KNOB 3231WN


**Oiled Bronze**  


PULL 3230OB




KNOB 3231OB


### T-Bar Pulls

**Satin Nickel**  


12 3/8" PULL 4701SN




8 5/8" PULL 4712SN




5 1/4" PULL 4730SN

### Bow Pulls

**Verona Bronze**  


PULL 3129VB

**Satin Nickel**  


PULL 3129SN

### Twisted Crescent Pull

**Satin Nickel**  

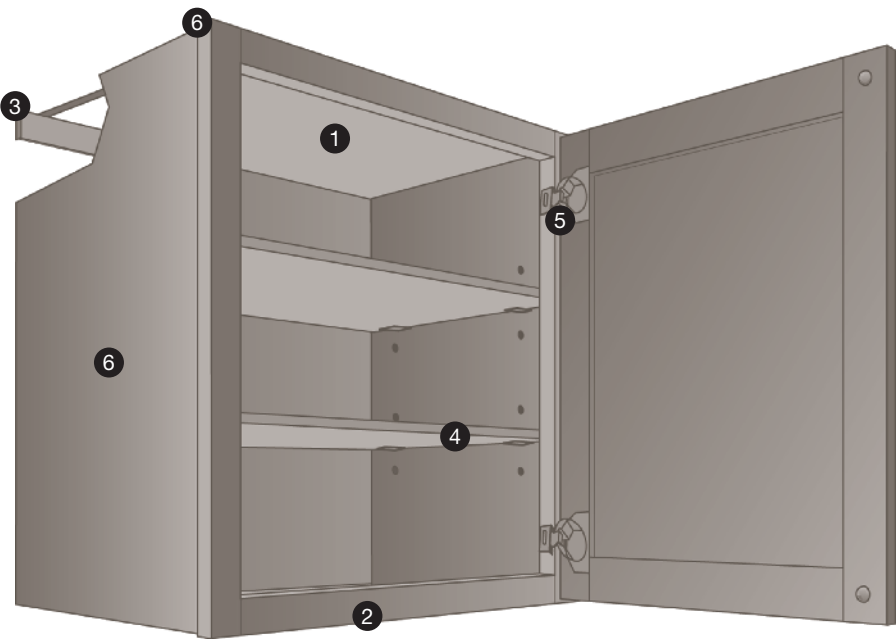

PULL 3122SN



# Woodmark PRO Finishes

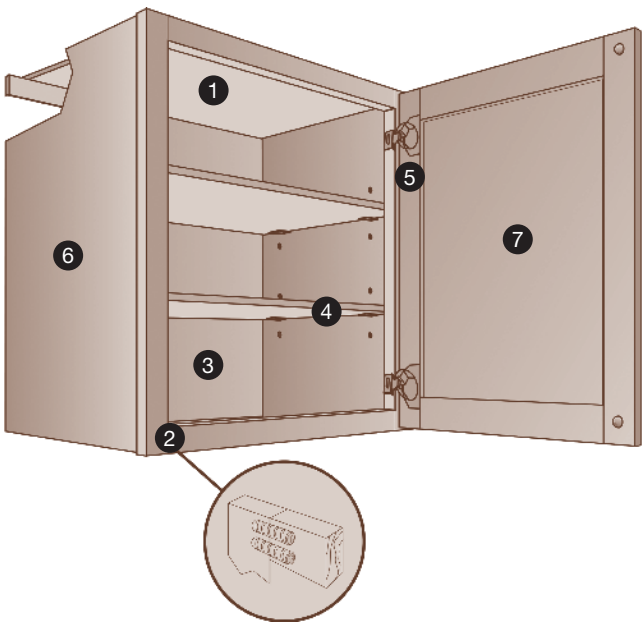
	PAINTED									MAPLE					CHERRY		DURAFORM <sup>®</sup>							
	HARBOR	EMBER GLAZE	STONE	BOULDER	LINEN	PEWTER GLAZE	SILK	HAZELNUT GLAZE	NAVY	RYE	SPICE		COGNAC	TRUFFLE	SLATE	JAVA	SLATE	HARBOR	STONE	LINEN	ESPRESSO	BREEZE	DRIFT	CASCADE
Leesburg <sup>®</sup>																								
Ashland <sup>®</sup>																								
Reading <sup>®</sup>																								
San Mateo <sup>®</sup>																								
Portola <sup>®</sup>																								
Hanover <sup>®</sup>																								
Savannah <sup>®</sup>																								
Brookland <sup>®</sup>																								
Portland <sup>®</sup>																								
Westerly <sup>®</sup>																								
Glen Ellen <sup>®</sup>																								
Del Ray <sup>®</sup>																								
MacArthur <sup>®</sup>																								
Shorebrook <sup>®</sup>																								
Garner <sup>®</sup>																								





Wall Cabinets

- 1 **Top/Bottom Panels:** 1/2" structural hanging rail. 1/2" plywood top and bottom options.
- 2 **Face Frame:** 3/4" x 1 1/8" hardwood, solid, kiln-dried face frame.
- 3 **Back Panel:** 1/8" hardboard substrate captured back.
- 4 **Shelf:** 3/4" engineered wood shelving with edge banding, metal shelf rests and adjustable shelf holes. 3/4" thick plywood shelving with edge banding option.
- 5 **Hinges:** Hidden Hinges<sup>®</sup> with CushionClose<sup>®</sup>. 6-way adjustable hinges.
- 6 **End Panels:** 1/2" engineered wood sides with TuffTech<sup>®</sup> finish. 1/2" plywood sides end option. 3/4" plywood sides furniture end option.



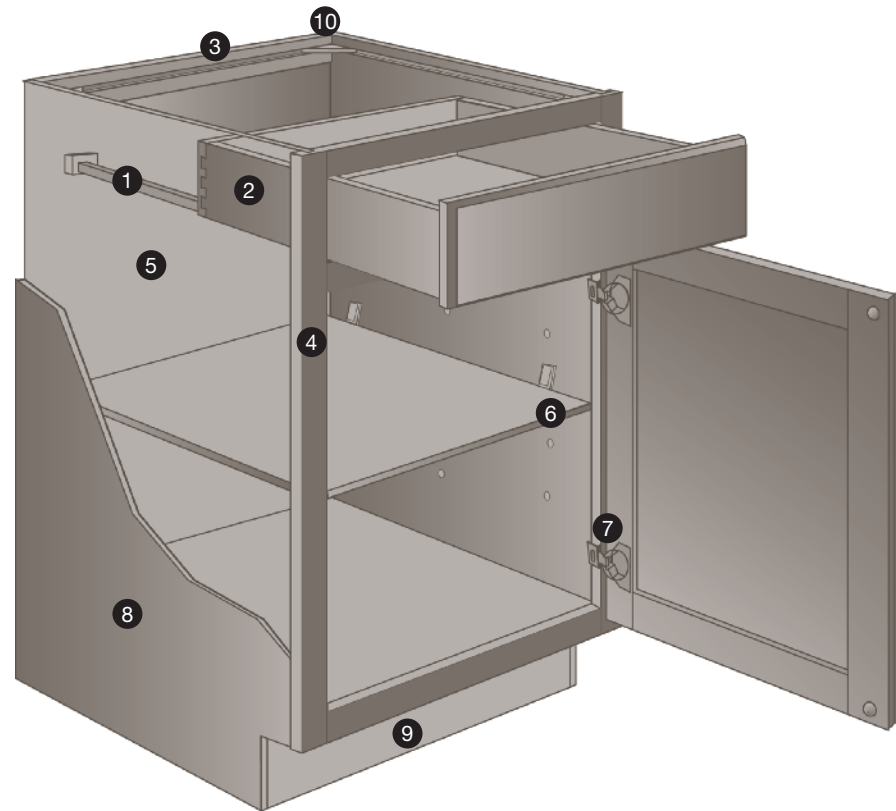
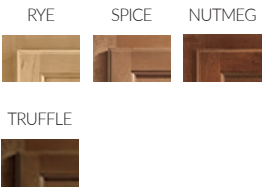
Wall Cabinets

- 1 **Top/Bottom Panels:** 1/2" structural hanging rail.
- 2 **Face Frame:** 3/4" x 1 1/8" solid hardwood face frame. Joints are pressure fitted, glued, double doweled & stapled.
- 3 **Back Panel:** 1/8" hardboard substrate captured back.
- 4 **Shelf:** 1/2" thick shelving with metal shelf rests.
- 5 **Hinges:** 6-way adjustable Hidden Hinges<sup>®</sup>.
- 6 **End Panels:** 1/2" engineered wood with our TuffTech<sup>®</sup> finishing system.
- 7 **Doors:** Floating center panel with our BeautyGuard<sup>®</sup> finishing system used on wood doors.

Clearfield<sup>®</sup>

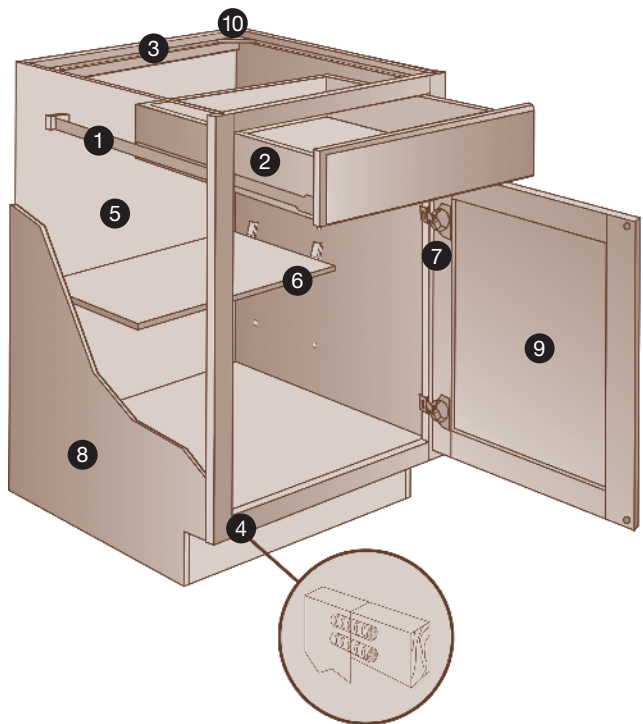


- Partial overlay
- Recessed panel



Base Cabinets

- 1 **Drawer Glides:** Full Access Hidden Glides<sup>®</sup> System with CushionClose<sup>®</sup>
- 2 **Drawer Box:** Adjustable hardwood drawer front with 5/8" dovetail box and plywood bottom.
- 3 **Top Panel:** 3/4" hardwood hanging rail. 1/2" plywood top and bottom options.
- 4 **Face Frame:** 3/4" x 1 1/8" hardwood, solid, kiln-dried face frame.
- 5 **Back Panel:** 1/8" hardboard substrate captured back.
- 6 **Shelf:** 3/4" engineered wood shelving with edge banding, and base locking shelf rests. 3/4" thick plywood shelving with edge banding option.
- 7 **Hinges:** Hidden Hinges<sup>®</sup> with CushionClose<sup>®</sup>. 6-way adjustable hinges.
- 8 **End Panels:** 1/2" engineered wood sides with TuffTech<sup>®</sup> finish. 1/2" plywood sides end option. 3/4" plywood sides furniture end option.
- 9 **Toe Kick:** 1/2" engineered wood inset toe kick. 1/2" plywood inset toe kick option.
- 10 **Corner Block**



Base Cabinets

- 1 **Drawer Glides:** Side-mounted, epoxy coated & self-aligning.
- 2 **Drawer Box:** 1/2" thick engineered wood with MDF bottoms, finished with our TuffTech<sup>®</sup> finishing system. Upgrade Option: 5/8" Dovetail hardwood drawer box with laminated MDF bottom.
- 3 **Top Panel:** 3/4" hardwood hanging rail.
- 4 **Face Frame:** 3/4" x 1 1/8" solid hardwood face frame. Joints are pressure fitted, glued, double doweled & stapled.
- 5 **Back Panel:** 1/8" hardboard substrate captured back.
- 6 **Shelf:** 1/2" thick shelving with locking plastic shelf rests.
- 7 **Hinges:** 6-way adjustable Hidden Hinges<sup>®</sup>.
- 8 **End Panels:** 1/2" engineered wood with our TuffTech<sup>®</sup> finishing system.
- 9 **Doors:** Floating center panel with our BeautyGuard<sup>®</sup> finishing system used on wood doors.
- 10 **Corner Block**

Sunbrook<sup>®</sup>



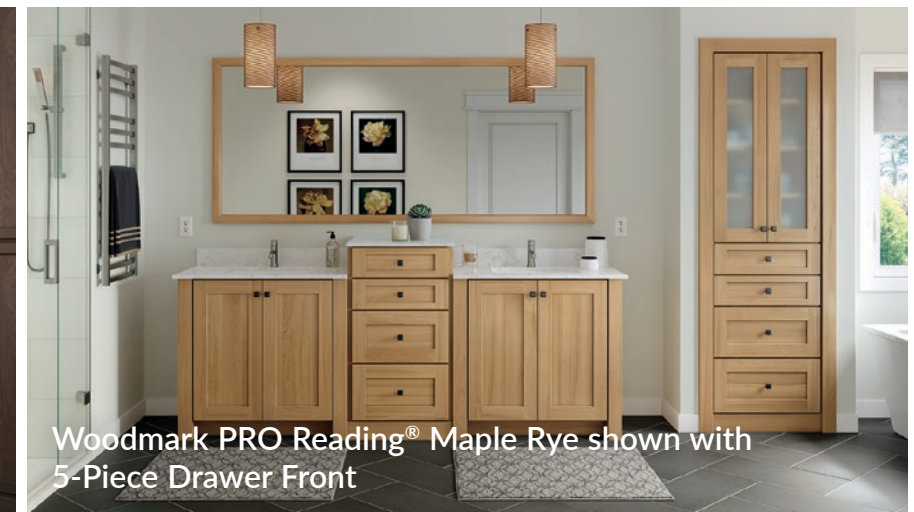
- Full overlay
- Raised panel





# A professional look for *every room.*

American Woodmark's PROfolio™ lineup offers cabinetry solutions for the whole home — kitchens, bathrooms, work spaces, utility rooms and more. Our collections offer the styles you want, with the functions you need, at a price you can afford.



**Get Pro support.**

[hdpro@woodmark.com](mailto:hdpro@woodmark.com)

[woodmarkcabinetry.com/pro](http://woodmarkcabinetry.com/pro)

Customer Care: 1-855-HDPRO44

[resources.woodmarkcabinetry.com/pro](http://resources.woodmarkcabinetry.com/pro)



# Program Features

HAMPTON BAY

HAMPTON BAY

DESIGNER SERIES

Woodmark<sup>AMERICAN</sup>PRO<sup>®</sup>

## Standard Construction

Framed	●		●
Frameless		●	
1/2" Thick Engineered Wood Cabinet Sides	●		●
5/8" Side Panels		●	
Half Depth Adjustable Base Shelves	●		
Full Depth Adjustable Base Shelves		●	●
CushionClose <sup>®</sup>		●	●

## Drawers & Glides

Ball-bearing Hardwood Drawer Box	●		
Full Access Soft-Close & Dovetail Drawer Box		●	
Full Access Soft-Close & Dovetail Drawer Box with Plywood Bottoms			●

## Hinges

Fully Concealed & Adjustable	●		
Soft-Close Doors & Adjustable		●	●

## Delivery

Free to Jobsite (no minimum)			●
Free 1/2 and FTL to Jobsite	●	●	●
\$99 to Jobsite (.com)	●	●	

## Discounts

1/2 and Full Truckload Discounts	●	●	
10% off 10+ Cabinets	●	●	
Exclusive Pro Pricing			●
Volume Pricing available			●

## Warranty

Lifetime Limited - Finished Cabinetry	●	●	●
1 Year Limited - Unfinished Cabinetry	●		

## Available Options & Modifications

All Plywood Construction			●
Plywood Ends			●
Furniture Ends			●



ANSI/KCMA A161.1



KITCHEN CABINET MANUFACTURERS ASSOCIATION  
ENVIRONMENTAL STEWARDSHIP PROGRAM (ESP)  
ALL PRODUCTS IMPACT THE ENVIRONMENT  
FOR ESP PROGRAM CRITERIA, VISIT KCMA.ORG



All American Woodmark products meet or exceed the stringent performance requirement established by the Kitchen Cabinet Manufacturing Association (KCMA). The KCMA Performance & Construction Standards ANSI/KCMA A161.1 is recognized & over-seen by the American National Standards Institute. This standard also meets the HUD specification 4910.1 Paragraph 611-1.1, Minimum Property Standards for Housing.

To see more samples of our cabinetry,  
please visit The Home Depot nearest you.



©2021 American Woodmark Corporation<sup>®</sup> The Home Depot<sup>®</sup> is a registered trademark of Home Depot, Inc. 02/21

Customer Care: 1-855-HDPRO44 | WoodmarkCabinetry.com/PRO