



Welcome to our portfolio of brands.



HAMPTON BAY

HAMPTON BAY

DESIGNER SERIES

AMERICAN
WoodmarkPRO

Why choose PROfolio by American Woodmark.



HAMPTON BAY

- In-stock, framed cabinetry solution when price and speed are priority
- Opening price point, with half and full truckload discount program
- Fully assembled and ready to install
- Limited Lifetime Warranty

HAMPTON BAY

DESIGNER SERIES

- Frameless, special order cabinetry with a modern style
- Excellent value with upgraded features, such as soft close glides and hinges
- Fully assembled, ready to install with increased design flexibility
- Limited Lifetime Warranty

AMERICAN WoodmarkPRO[®]

- Special order, semi-custom cabinetry to meet the majority of customer needs
- 250+ door cut, color and species combinations
- Free jobsite delivery with no minimums —express manufacturing also available
- Limited Lifetime Warranty

PROGRAM FEATURES

HAMPTON BAY

HAMPTON BAY
DESIGNER SERIES

Woodmark^{AMERICAN}PRO[®]

	HB	HBDS	AW PRO
# of Door Styles	2 door styles plus unfinished*	5	15
# of Finishes	7 finishes plus unfinished*	7	23
Consumer & Store Order Options	Stock & online**, SO/EO (2020), Quote Center (where available in-stock)	Online, SO (2020), Quote Center	SO (2020), Quote Center (available for most popular doors, finishes and SKUs)
Lead Time	Online ships in 2 days, EO and Quote Center ships in 2 weeks	Ships in 2 weeks	Delivers in 3–4 weeks Express Delivery available (additional fees apply)
Jobsite Delivery	Delivers free to the jobsite in3 weeks (applies to ½ and full truckloads when ordered through the Quote Center only)	THD.com only \$99 Delivers free to the jobsite in 3 weeks (applies to 1/2 and full truckloads when ordered through the Quote Center only)	Free delivery included with Woodmark PRO
Warranty	Limited lifetime	Limited lifetime	Limited lifetime
Volume Discounts	10% off for 10+ cabinets (store, EO, & Quote Center) 20% off for 75+ cabinets (1/2 truckload) – applies to QC orders only 25% off for 150+ cabinets (full truckload) – applies to QC orders only		Volume discounts available
Construction			
Construction Type	Framed	Frameless	Framed Plywood upgrade available
# of SKUs per Finish	105	176	618
Standard Drawer Construction	Ball-bearing, hardwood drawer box	Full access soft-close & dovetail drawer box	Full access soft-close & dovetail drawer box with plywood bottoms
Hinges & Glides	Fully concealed and adjustable	Soft-close doors & drawers	Soft-close on doors, drawers and rollouts; option to select non-soft-close if needed
Service			
Customer Care	1.888.578.4009	1.800.230.5661	1.800.677.8182
PRO Customer Care	1.855.HDPRO44 hdpro@woodmark.com		
Website	www.hamptonbaycabinets.com	www.hamptonbaykitchens.com	www.woodmarkcabinetry.com

*Unfinished product specifications and SKU listing vary **Available in-stock and online. Availability may vary by market.

Look what you can do with PROfolio.

American Woodmark's PROfolio lineup offers cabinetry solutions for the whole home — kitchens, bathrooms, work spaces, utility rooms and more. Our collections offer the styles your customers want, with the functions they need, at a price they can afford.

Shaker

Brindle
■ Full overlay

Dove Gray RTF
■ Full overlay

Java
■ Full overlay

Satin White RTF
■ Full overlay

Hampton

Unfinished



Cognac
■ Partial Overlay

Satin White RTF
■ Full Overlay

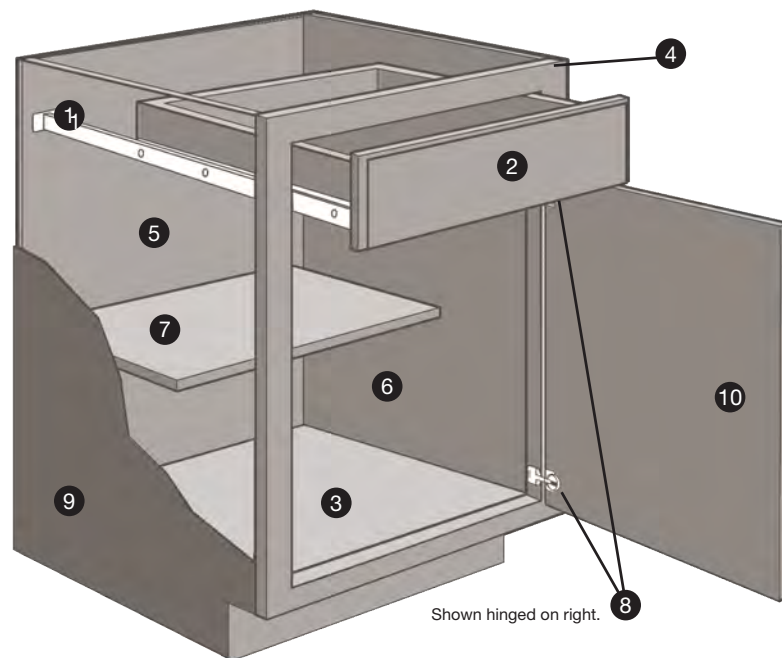
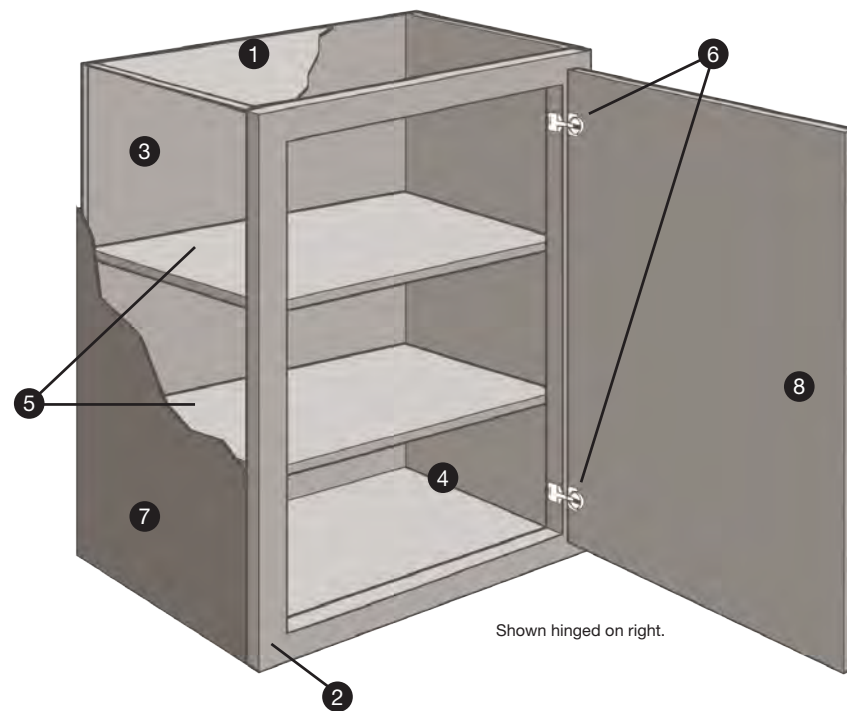
Medium Oak
■ Partial Overlay

Natural Hickory
■ Partial Overlay

Unfinished
■ Partial Overlay



Construction – Hampton Bay



Wall Cabinets

- ❶ **Top/Bottom Panels:** 3/8" engineered wood fully encapsulated in the face frame, back and side panels.
- ❷ **Face Frame:** Pocket screw construction with 3/4" thick, 1-1/2" wide material.
- ❸ **Back Panel:** Full 3/8" back panel fully encapsulated into top and bottom panels for strength.
- ❹ **Interiors:** Natural maple laminate finish on engineered wood.
- ❺ **Shelves:** 3/4" thick adjustable shelves with metal shelf pins.
- ❻ **Hinges:** Fully concealed and adjustable.
- ❼ **End Panels:** Finished cabinetry – 1/2" engineered wood with laminated exterior to match cabinet finish. Unfinished cabinetry – 1/2" engineered wood with raw exterior.
- ❽ **Door:** Reversible door on single-door cabinets for left or right opening. Hinged on the left from the factory. Double door cabinets are full-access, no center stile.

Base Cabinets

- ❶ **Drawer Glides:**
Finished cabinetry – Ball-Bearing Unfinished cabinetry – Epoxy
- ❷ **Drawer Box:** Hardwood 4-sided drawer box with fully encapsulated bottom panel.
- ❸ **Bottom Panels:** 3/8" engineered wood fully encapsulated in the face frame, back and side panels.
- ❹ **Face Frame:** Pocket screw construction with 3/4" thick, 1-1/2" wide material.
- ❺ **Back Panel:** Full 3/8" hardboard with a natural maple laminate interior. Sink bases must be cut for plumbing access.
- ❻ **Interiors:** Natural maple laminate finish on engineered wood.
- ❼ **Shelf:** 3/4" thick adjustable half-depth shelf.
- ❽ **Hinges:** Fully concealed and adjustable.
- ❹ **End Panels:** Finished cabinetry – 1/2" engineered wood with laminated exterior to match cabinet finish. Unfinished cabinetry – 1/2" engineered wood with raw exterior.
- ❽ **Door:** Reversible door on single-door cabinets for left or right opening. Hinged on the left from the factory. Double door cabinets are full-access, no center stile.

Collections - Hampton Bay Designer Series

Gretna

Edgeley

Espresso

■ Frameless Construction

White

■ Frameless Construction

Glacier

■ Frameless Construction

Driftwood

■ Frameless Construction

Thunder

■ Frameless Construction

Elgin

Melvorn

Soleste

White

■ Frameless Construction

Heron Gray

■ Frameless Construction

White

■ Frameless Construction

Heron Gray

■ Frameless Construction

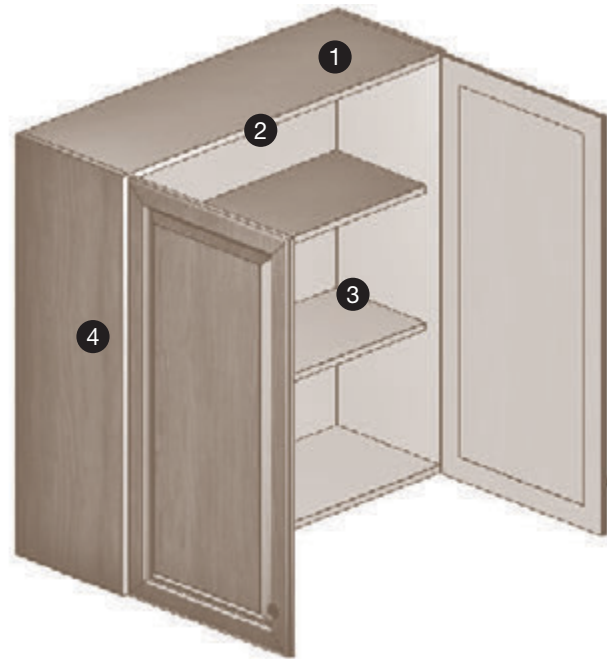
Spice

■ Frameless Construction



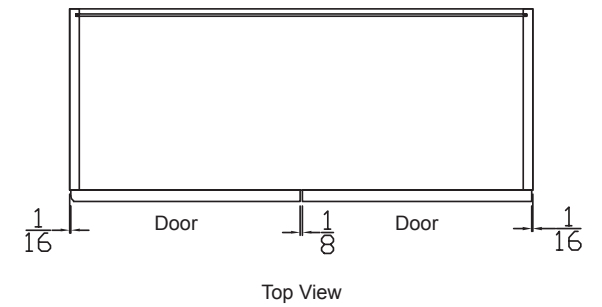
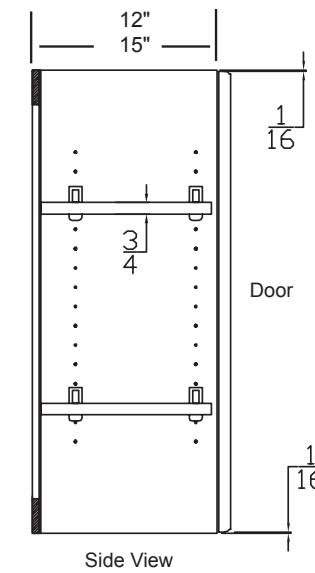
Construction – Hampton Bay Designer Series

HAMPTON BAY | DESIGNER SERIES

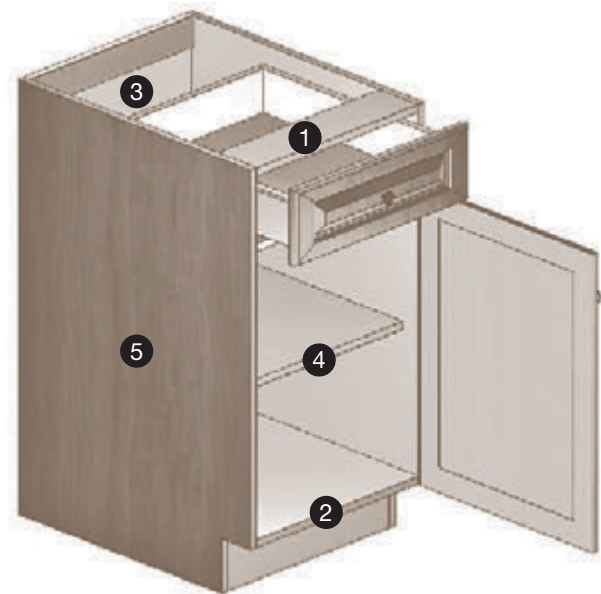


Wall Cabinets

- ❶ **Top/Bottom Panels:** 3/4" laminated furniture board.
- ❷ **Back Panel:** 1/4" laminated furniture board with 4" x 1/2" concealed furniture board mounting rails top and bottom. Cabinets 36" and wider will be drilled for center shelf supports.
- ❸ **Shelves:** Fully adjustable 3/4" laminated furniture board. Cabinets 21" tall and shorter do not include adjustable shelves. Cabinets 24" tall include one shelf and two hinges. Cabinets 30" and 36" tall include two adjustable shelves and two hinges. Cabinets 42" tall include three adjustable shelves and three hinges.
- ❹ **End Panels:** 5/8" laminated furniture board.

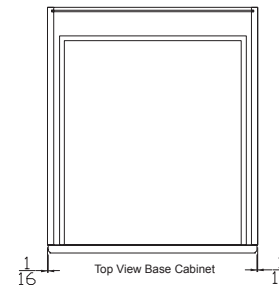
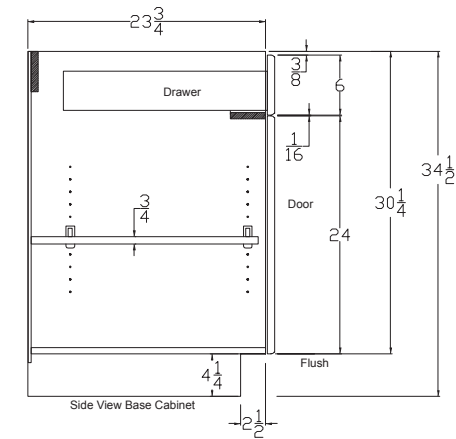


Note: Any cabinet with a matching interior will be constructed (top, bottom, back, shelves and sides) from 5/8" material.

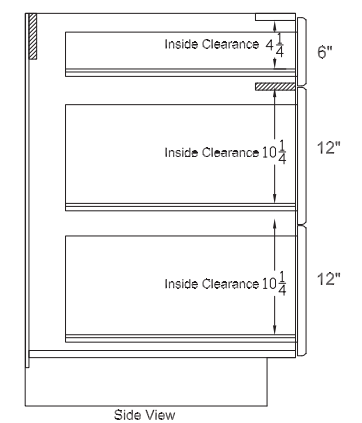


Base Cabinets

- ❶ **Top Panel:** 5/8" plywood rails.
- ❷ **Bottom Panel:** 5/8" laminated furniture board.
- ❸ **Back Panel:** 1/4" laminated furniture board with 4" x 5/8" plywood mounting rail.
- ❹ **Shelf:** Fully adjustable 3/4" laminated furniture board.
- ❺ **End Panels:** 5/8" laminated furniture board.



3 Drawer Stack



Collections—Woodmark PRO

We offer more choices with a wide range of styles from traditional to contemporary.

Leesburg [®]	Ashland [®]	Reading [®]	MacArthur [®]	Shorebrook [®]	Portola [®]	Hanover [®]	Savannah [®]
<ul style="list-style-type: none">• Full overlay, with 2-1/4" frame• Recessed shaker panel*• Can be enhanced with optional 5-Piece drawer front	<ul style="list-style-type: none">• Partial overlay• Recessed panel*	<ul style="list-style-type: none">• Full overlay, with 3" frame• Recessed shaker panel*• Can be enhanced with optional 5-Piece drawer front***	<ul style="list-style-type: none">• Full overlay mitered• Recessed panel*	<ul style="list-style-type: none">• Full overlay• Recessed beadboard panel*	<ul style="list-style-type: none">• Full overlay• Raised panel*• Can be enhanced with optional 5-Piece drawer front**	<ul style="list-style-type: none">• Full overlay• Slab veneer panel with solid wood edge banding	<ul style="list-style-type: none">• Full overlay mitered• Raised panel*• 5-Piece mitered drawer front*

Brookland [®]	Portland [®]	Del Ray [®]	Garner [®]	Westerly	Glen Ellen [®]	San Mateo [®]
<ul style="list-style-type: none">• Full overlay mitered• Recessed panel	<ul style="list-style-type: none">• Partial overlay• Raised panel	<ul style="list-style-type: none">• Full overlay, with 3" frame• Recessed shaker panel*• Cascading top and bottom rails	<ul style="list-style-type: none">• Full overlay mitered• Recessed Panel*	<ul style="list-style-type: none">• Full overlay• Raised Panel Doors• Slab Drawer Fronts	<ul style="list-style-type: none">• Partial overlay mitered• Recessed panel• Only available in Duraform	<ul style="list-style-type: none">• Partial overlay• Recessed shaker panel• Only available in Duraform

Simply WoodmarkPRO

Clearfield[®] Sunbrook[®]

■ Partial overlay

■ Recessed panel

■ Full overlay

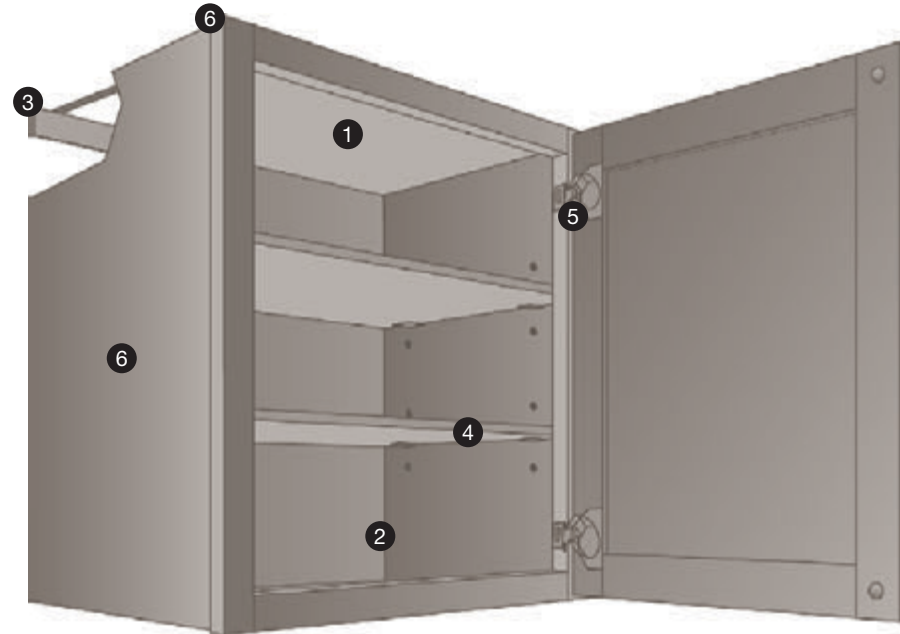
■ Raised panel

*Painted finishes may blend engineered and natural materials for a more consistent product.
**Not available in Duraform[®]
***Slab Drawer Front Not available in Duraform[®]



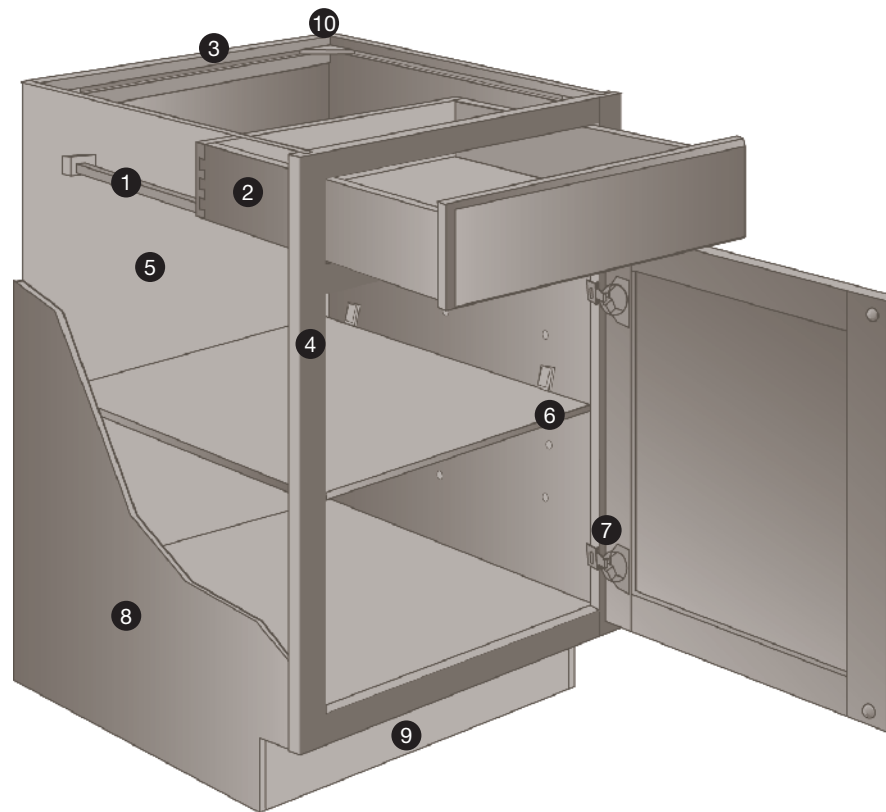
	PAINTED									MAPLE					CHERRY		DURAFORM [®]						
	HARBOR	EMBER GLAZE	STONE	BOULDER	LINEN	PEWTER GLAZE	SILK	HAZELNUT GLAZE	NAVY	RYE	SPICE	COGNAC	TRUFFLE	SLATE	JAVA	SLATE	HARBOR	STONE	LINEN	ESPRESSO	BREEZE	DRIFT	CASCADE
Leesburg [®]																							
Ashland [®]																							
Reading [®]																							
San Mateo [®]																							
Portola [®]																							
Hanover [®]																							
Savannah [®]																							
Brookland [®]																							
Portland [®]																							
Westerly [®]																							
Glen Ellen [®]																							
Del Ray [®]																							
MacArthur [®]																							
Shorebrook [®]																							
Garner [®]																							

Construction – Woodmark PRO



Wall Cabinets

- ① **Top/Bottom Panels:** 1/2" structural hanging rail. 1/2" plywood top and bottom options.
- ② **Face Frame:** 3/4" x 1 1/8" hardwood, solid, kiln-dried face frame.
- ③ **Back Panel:** 1/8" hardboard substrate captured back.
- ④ **Shelf:** 3/4" engineered wood shelving with edge banding, metal shelf rests and adjustable shelf holes. 3/4" thick plywood shelving with edge banding option.
- ⑤ **Hinges:** Hidden Hinges[®] with CushionClose[®]. 6-way adjustable hinges.
- ⑥ **End Panels:** 1/2" engineered wood sides with TuffTech[®] finish. 1/2" plywood sides end option. 3/4" plywood sides furniture end option.



Base Cabinets

- ① **Drawer Glides:** Full Access Hidden Glides[®] System with CushionClose[®]
- ② **Drawer Box:** Adjustable hardwood drawer front with 5/8" dovetail box and plywood bottom.
- ③ **Top Panel:** 3/4" hardwood hanging rail. 1/2" plywood top and bottom options.
- ④ **Face Frame:** 3/4" x 1 1/8" hardwood, solid, kiln-dried face frame.
- ⑤ **Back Panel:** 1/8" hardboard substrate captured back.
- ⑥ **Shelf:** 3/4" engineered wood shelving with edge banding, and base locking shelf rests. 3/4" thick plywood shelving with edge banding option.
- ⑦ **Hinges:** Hidden Hinges[®] with CushionClose[®]. 6-way adjustable hinges.
- ⑧ **End Panels:** 1/2" engineered wood sides with TuffTech[®] finish. 1/2" plywood sides end option. 3/4" plywood sides furniture end option.
- ⑨ **Toe Kick:** 1/2" engineered wood inset toe kick. 1/2" plywood inset toe kick option.
- ⑩ **Corner Block**

Construction – Woodmark PRO

Standard Construction

- 1/2" engineered wood sides with TuffTech[®] finish
- Full Access Hidden Glides[®] System.
- 3/4"-thick engineered wood shelving with edge banding.
- Adjustable drawer front with 5/8" dovetail box and plywood bottom.
- 1/2" engineered wood inset toe kick.

Quality Features

- Full Access Hidden Glides[®] System.
- Hardwood drawers with dovetail construction
- 6-way adjustable hinges.
- Solid, kiln-dried face frames.

Plywood Ends Option

- 1/2" plywood sides.

All Plywood Construction Option

- 1/2" plywood sides, Doors and cabinet tops.
- 3/4"-thick plywood shelving with edge banding.
- 1/2" plywood inset toe kick.

All Plywood Construction refers to the cabinet box components and shelving as detailed in our specification guide (woodmarkcabinetry.com/specguide.asp). Plywood components meet the Decorative Hardwoods Association's standards for hardwood and decorative plywood (www.decorativehardwoods.org).

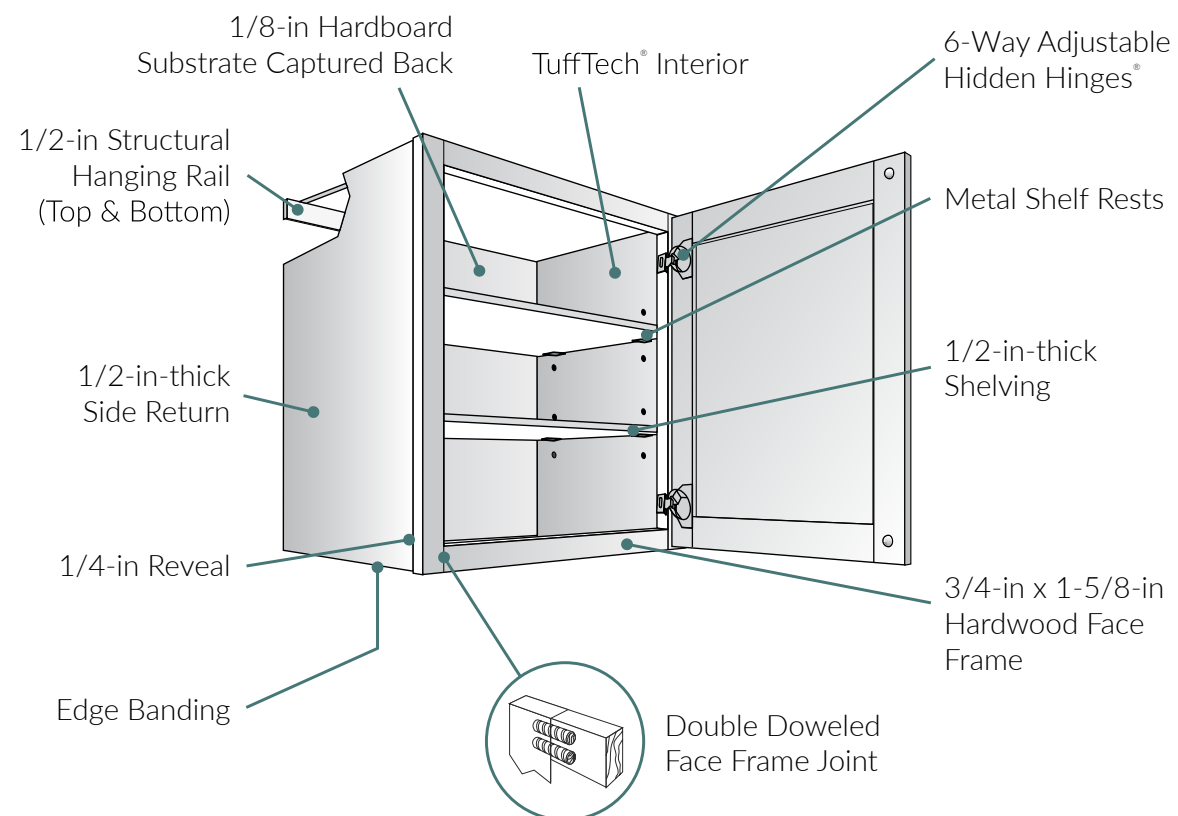


Woodmark PRO Drawer Construction

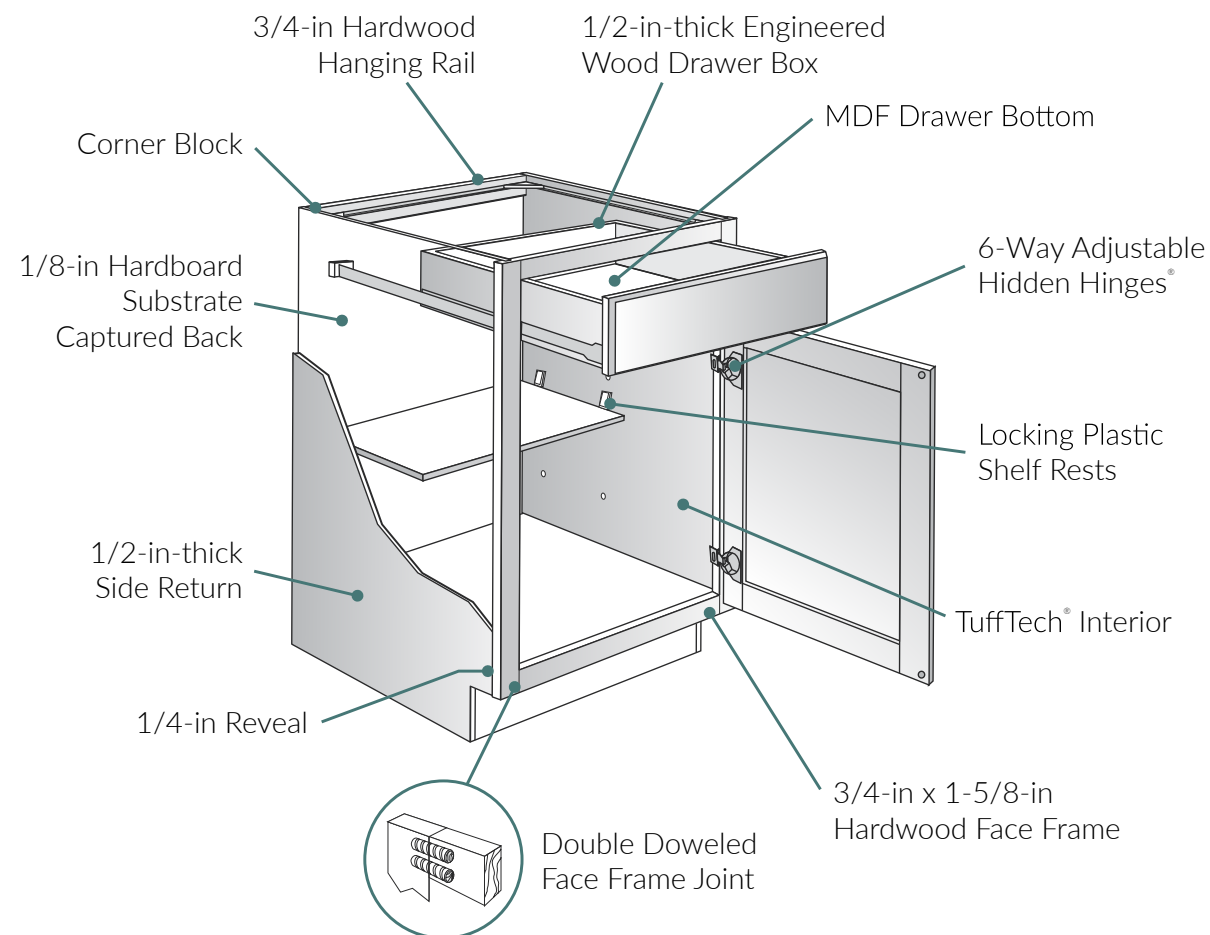
Cabinets utilize natural finish dovetail hardwood drawers with plywood bottoms and Full Access Hidden Glides[®] or Full Access CushionClose[®] Glides. All drawers meet KCMA load standards of 15 pounds per square foot.

Construction – Simply Woodmark PRO

Wall Cabinets



Base Cabinets



Standard Construction

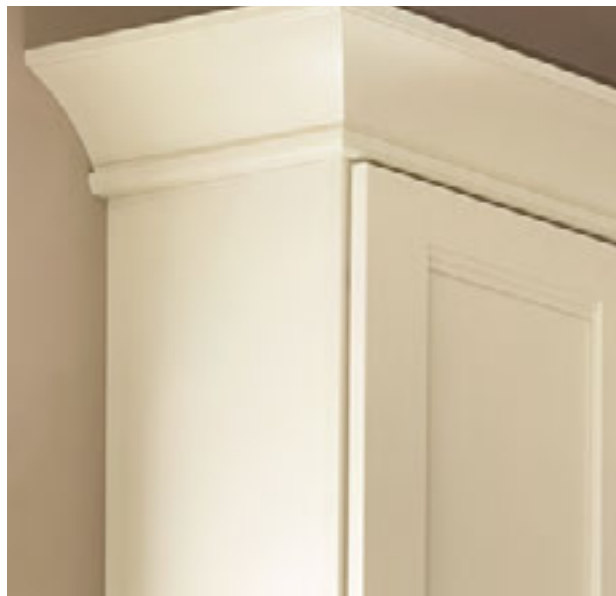
- Face Frames: 3/4-in x 1-5/8-in solid hardwood. Joints are pressure fitted, glued, double doweled & stapled.
- Sides: 1/2-in-thick engineered wood with our TuffTech® finishing system.
- Drawers: 1/2-in-thick engineered wood with MDF bottoms, finished with our TuffTech® finishing system.
Upgrade Option: 5/8-in Dovetail hardwood drawer box with laminated MDF bottom.
- Drawer Glides: Side-mounted, epoxy coated & self-aligning.
- Hinges: 6-way adjustable Hidden Hinges®.
- Doors: Floating center panel with our BeautyGuard® finishing system used on wood doors.

Options for Woodmark PRO



Inverted Frame

By inverting the frame, the drawer is placed at the bottom of the cabinet. This helps raise internal organizational items and also allows standard cabinets to be used as sink bases when needed.



Furniture Ends

The 1/4" face frame reveal is removed for a clean, furniture look on exposed cabinet ends and islands. This makes molding wraps easier and saves installation time.



Increased/Reduced Depth

Adding or reducing depth in one-inch increments creates a custom look and more design flexibility. This can be helpful in accommodating larger items or designing around obstructions.



Recessed Toe Kick

Create a more finished look to the end of a cabinet run or an island with this important ergonomic element.

Keep it Quiet with CushionClose[®]

Enjoy the whisper-quiet luxury of a complete CushionClose kitchen. With smooth, self-closing performance, CushionClose reduces slams, noise and finger pinching. This unique technology comes automatically on all doors, drawers and roll outs, unless de-selected as an option.



Drawers



Roll Outs

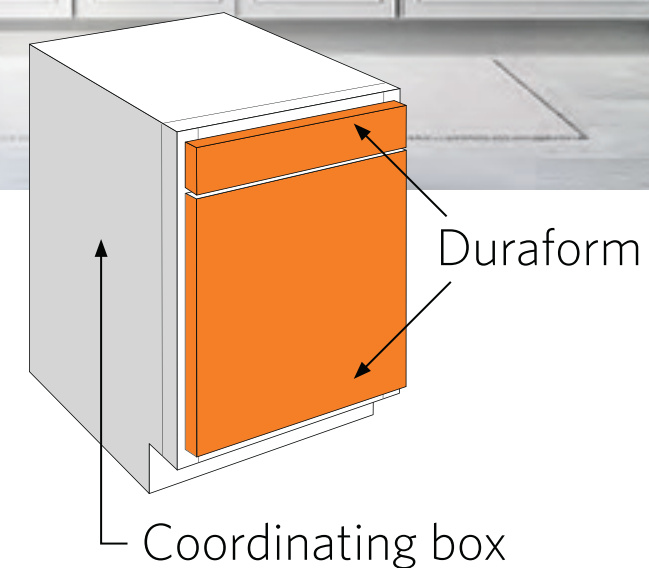


Doors

Options for Woodmark PRO

Duraform[®]

Duraform[®] uses foils and coatings bonded to warp-resistant composite wood. Advanced technology provides consistent finishes that are durable, easy to clean and resistant to heat, humidity and fading. Available in Espresso, Stone, Harbor, Linen, Breeze, Drift, and Cascade on coordinating Linen box, Drift on coordinating Harbor box, and Cascade on coordinating Espresso Box.



Options for Woodmark PRO

Universal Design Cabinets

Universal Design cabinets can create comfortable and accessible spaces for individuals of all ages and abilities, which helps PROs close more jobs. Just one more reason why American Woodmark[®] is the complete cabinet solution — for your DIYer, Flipper and PRO.

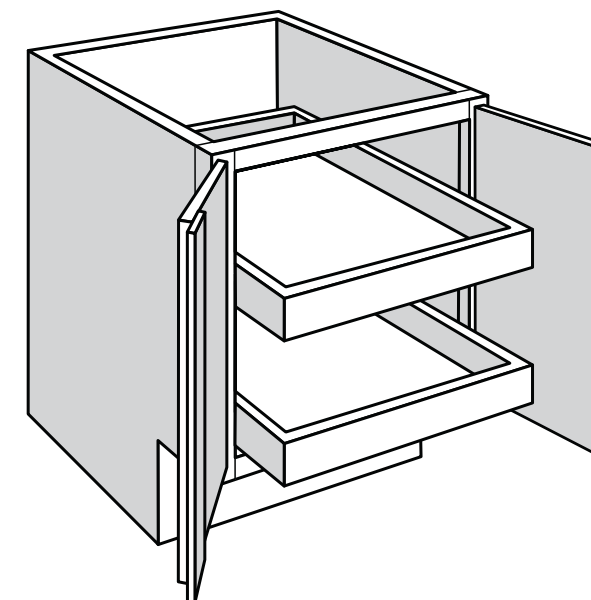
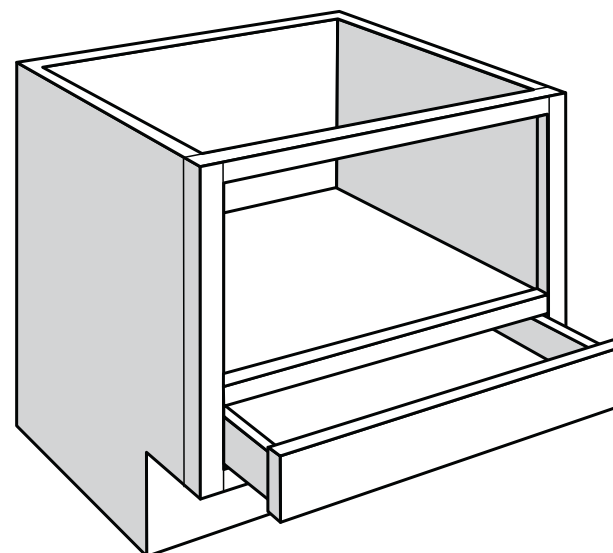
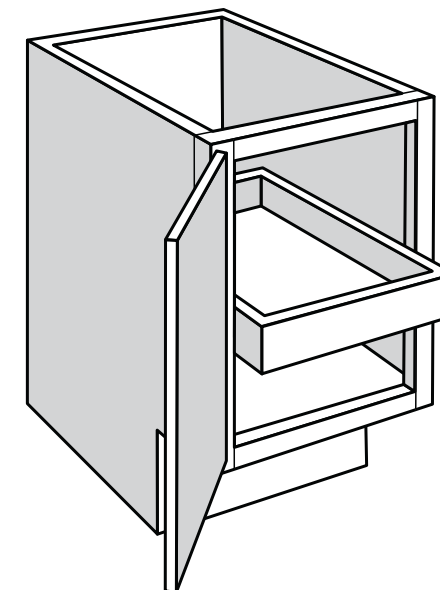
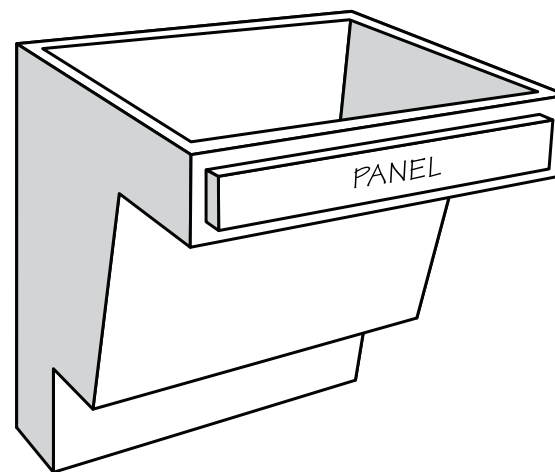
Product Highlights

- Universal Design improves function and access for all — regardless of age or ability
- Base Cabinets, Sink Base Cabinets, and Drawer Base Cabinets 32 ½" high provide lower work surfaces
- 8" high and 6 ½" deep toe kick facilitates accessibility
- HUD Certified

NOTE: See the full Universal Design selection and specifications at resources.woodmarkcabinetry.com.



All American Woodmark products meet or exceed the stringent performance requirement established by the Kitchen Cabinet Manufacturing Association (KCMA). The KCMA Performance & Construction Standards ANSI/KCMA A161.1 is recognized & over-seen by the American National Standards Institute. This standard also meets the HUD specification 4910.1 Paragraph 611-1.1, Minimum Property Standards for Housing.



Decorative Accents and Moldings



See our full decorative accents and moldings selection at [WoodmarkCabinetry.com](https://www.woodmarkcabinetry.com).

PROFOLIO
AMERICAN WOODMARK

HAMPTON BAY

HAMPTON BAY
DESIGNER SERIES

WOODMARK PRO

SERVICE
& SUPPORT

INSPIRATIONAL
GALLERY

Storage and Organization Solutions



See our full storage and organization solutions selection at [WoodmarkCabinetry.com](https://www.WoodmarkCabinetry.com).

Accessories

Accent Doors and Glass Inserts



CLEAR



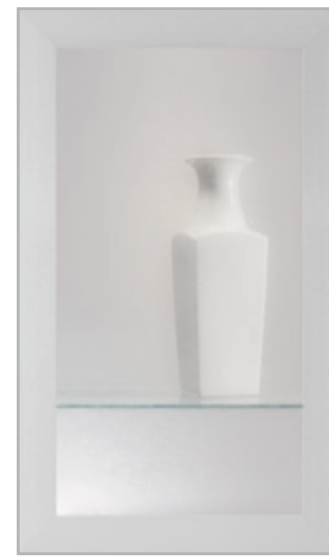
DERBYSHIRE



MEREDITH



IMPRESSION



ALUMINUM FRAME



RIBBED



FROSTED GLASS



FROSTED ASH



MULLION FRAME



Knobs & Pulls – Tier 1

Accentuate your style with quality hardware. Grouped in three price tiers, and available in a variety of looks and colors, it's easy to find just the right piece at just the right price.

Classic Knobs & Pulls



Arched Pulls



Twisted Crescent Pull



Elliptical Knobs



Button Knob

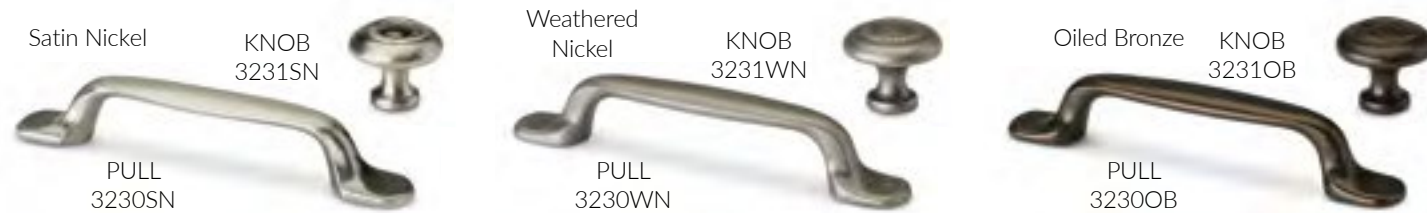


T-Bar Knobs



Knobs & Pulls – Tier 2

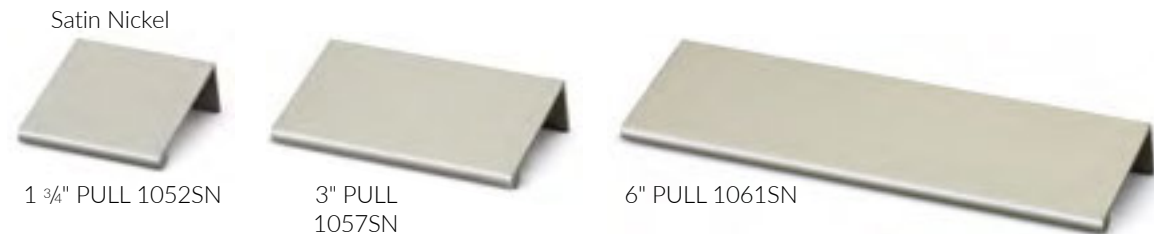
Rope Knobs & Flat Contour Pulls



Barrel Pulls



Tab Pulls



Cup Pulls



Rounded Cup Pulls



Toggle Knobs



Beveled Knobs



Turned Knobs



Stamped Knobs



Oak Leaf Knob & Pull



Craftsman Pull



Bow Pulls



Slotted Pulls



Knobs & Pulls – Tier 3

Twist Knobs & Pulls



Reeded Knob & Pulls



Elegant Pulls



Rustic Knob & Pull



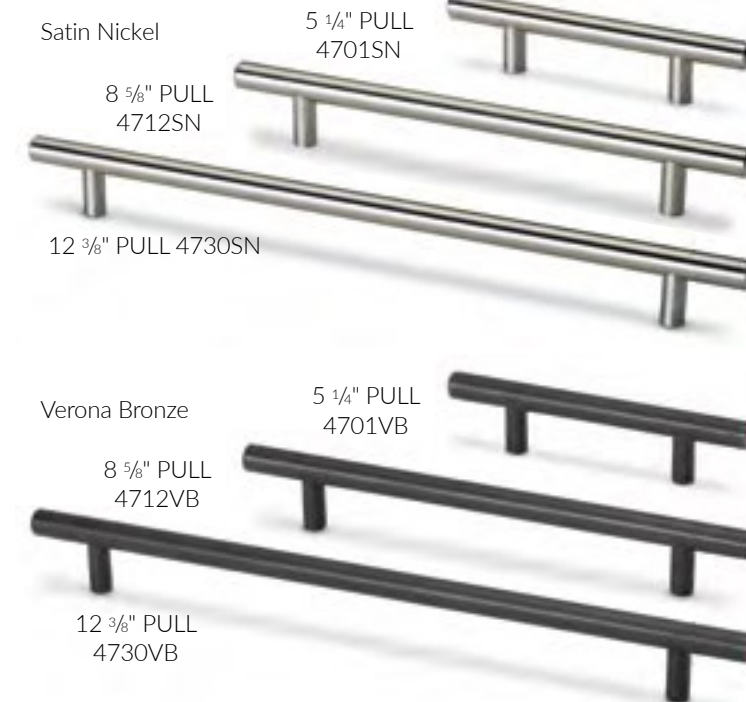
Rectangular Knobs & Pulls



Beaded Pulls



T-Bar Pulls



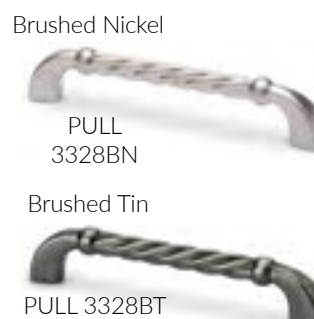
Sculpted Knobs & Pulls



Vintage Pulls



Turned Pulls



Woodmark knows Pros. *Rely on the experts.*

We know that every Pro is different, and every Pro project requires different resources. Our versatile cabinetry lines of Hampton Bay, Hampton Bay Designer Series and Woodmark PRO give you the style, prices and construction you need to get your specific job done, and done right.

We also know that two of the most important criteria for you when buying are everyday low prices that do not depend on limited promotions and timing. You know a good deal when you see one, which is why our PROfolio™ program offers one of the best—including a complete line of offerings at exclusive everyday low prices and options for easy delivery.

Features of our PROfolio program:

- Plywood construction available in Woodmark PRO®
- A guaranteed deliver-by date with
- American Woodmark PROXpress™
- Jobsite delivery
- Volume discounts available
- Best-in-class service

Get Pro support.

hdpro@woodmark.com

woodmarkcabinetry.com/pro

Customer Care: 1-855-HDPRO44

resources.woodmarkcabinetry.com/pro



Inspirational Kitchens

HAMPTON BAY



Shaker Brindle

Inspirational Kitchens

HAMPTON BAY



Shaker Dove Gray RTF

Inspirational Kitchens

HAMPTON BAY



Shaker Java

Inspirational Kitchens

HAMPTON BAY



Shaker Satin White RTF

Inspirational Kitchens

HAMPTON BAY



Hampton Cognac

Inspirational Kitchens

HAMPTON BAY



Hampton Satin White RTF

Inspirational Kitchens

HAMPTON BAY



Hampton Medium Oak

Inspirational Kitchens

HAMPTON BAY



Hampton Natural Hickory

Inspirational Kitchens

HAMPTON BAY | DESIGNER SERIES



Gretna Espresso

Inspirational Kitchens

HAMPTON BAY | DESIGNER SERIES



Edgeley White

Inspirational Kitchens

HAMPTON BAY | DESIGNER SERIES



Edgeley Glacier

Inspirational Kitchens

HAMPTON BAY | DESIGNER SERIES



Edgeley Driftwood

Inspirational Kitchens

HAMPTON BAY | DESIGNER SERIES



Edgeley Thunder

Inspirational Kitchens

HAMPTON BAY | DESIGNER SERIES



Elgin White

Inspirational Kitchens

HAMPTON BAY | DESIGNER SERIES



Elgin Heron Gray

Inspirational Kitchens

HAMPTON BAY | DESIGNER SERIES



Melvorn White

Inspirational Kitchens

HAMPTON BAY | DESIGNER SERIES



Melvorn Heron Gray

Inspirational Kitchens

HAMPTON BAY | DESIGNER SERIES



Soleste Spice

Inspirational Kitchens

Woodmark^{AMERICAN}PRO[®]



Westerly Painted Navy

Inspirational Kitchens

Woodmark^{AMERICAN}PRO[®]



Leesburg[®] DFO Duraform Espresso and Maple Cognac

Inspirational Kitchens

Woodmark^{AMERICAN}PRO[®]



Leesburg[®] Painted Navy & Linen

Inspirational Kitchens

Woodmark^{AMERICAN}PRO[®]



Garner[®] Painted Linen

Inspirational Kitchens

Woodmark^{AMERICAN}PRO[®]



Reading[®] Maple Slate shown with 5-Piece Drawer Front

Inspirational Kitchens

Woodmark^{AMERICAN}PRO[®]



Leesburg[®] Painted Boulder shown with Slab Drawer Front

Inspirational Kitchens

Woodmark^{AMERICAN}PRO[®]



Leesburg[®] Duraform Harbor/Hanover Duraform Espresso

Inspirational Kitchens

Woodmark^{AMERICAN}PRO[®]



Ashland[®] Painted Harbor

Inspirational Kitchens

Woodmark^{AMERICAN}PRO[®]



Reading[®] Duraform[®] Drift shown with 5-Piece Drawer Front

Inspirational Kitchens

Woodmark^{AMERICAN}PRO[®]



Reading[®] Cherry Slate shown with 5-Piece Drawer Front

Inspirational Kitchens

Woodmark^{AMERICAN}PRO[®]



San Mateo[®] Duraform[®] Linen

Inspirational Kitchens

Woodmark^{AMERICAN}PRO[®]



San Mateo[®] Duraform[®] Stone

Inspirational Kitchens

Woodmark^{AMERICAN}PRO[®]



Portola[®] Painted Harbor shown with 5-Piece Drawer Front

Inspirational Kitchens

Woodmark^{AMERICAN}PRO[®]



Hanover[®] Duraform[®] Cascade

Inspirational Kitchens

Woodmark^{AMERICAN}PRO[®]



Inspirational Kitchens

Woodmark^{AMERICAN}PRO[®]



Portland[®] Maple Cognac

Inspirational Kitchens

Woodmark^{AMERICAN}PRO[®]



Glen Ellen[®] Duraform[®] Linen accented with Duraform[®] Stone

Inspirational Kitchens

Woodmark^{AMERICAN}PRO[®]



Del Ray[®] Painted Silk

Inspirational Kitchens

Woodmark^{AMERICAN}PRO[®]



MacArthur[®] Painted Harbor accented with Maple Slate

Inspirational Kitchens

Woodmark^{AMERICAN}PRO[®]



MacArthur[®] Painted Pewter Glaze

Inspirational Kitchens

Woodmark^{AMERICAN}PRO[®]



Shorebrook[®] Painted Linen

Inspirational Kitchens



Clearfield® Nutmeg

Inspirational Vanities

HAMPTON BAY



Shaker Brindle

Inspirational Vanities

Woodmark^{AMERICAN}PRO[®]



Garner[™] Painted Navy

Inspirational Vanities

Woodmark^{AMERICAN}PRO[®]



Brookland[®] Duraform Espresso

Inspirational Vanities

Woodmark^{AMERICAN}PRO[®]



Reading[®] Maple Rye shown with 5-Piece Drawer Front

Inspirational Vanities

Woodmark^{AMERICAN}PRO[®]



Reading[®] Painted Stone shown with 5-Piece Drawer Front

Inspirational Vanities

Woodmark^{AMERICAN}PRO[®]



Portola[®] Painted Ember Glaze shown with 5-Piece Drawer Front

Inspirational Vanities

Woodmark^{AMERICAN}PRO[®]



Portola[®] Cherry Slate shown with Slab Drawer Front

Inspirational Vanities

Woodmark^{AMERICAN}PRO[®]



Hanover[®] Duraform[®] Drift

Inspirational Vanities

Woodmark^{AMERICAN}PRO[®]



Savannah[®] Painted Ember Glaze

Inspirational Vanities

Woodmark^{AMERICAN}PRO[®]



Brookland[®] Painted Ember Glaze

Inspirational Vanities

Woodmark^{AMERICAN}PRO[®]



Del Ray[®] Painted Boulder

Inspirational Spaces

HAMPTON BAY



Shaker Dove Gray RTF

Inspirational Spaces

HAMPTON BAY



Shaker Satin White RTF

Inspirational Spaces

HAMPTON BAY



Hampton Satin White RTF

Inspirational Spaces

HAMPTON BAY



Hampton Satin White RTF

Inspirational Spaces

HAMPTON BAY



Hampton Cognac

Inspirational Spaces

HAMPTON BAY



Hampton Natural Hickory

Inspirational Spaces

Woodmark^{AMERICAN}PRO[®]



San Mateo Duraform Harbor

Inspirational Spaces

Woodmark^{AMERICAN}PRO[®]



Inspirational Spaces

Woodmark^{AMERICAN}PRO[®]



Garner[®] Painted Linen



Garner[®] Painted Linen

Inspirational Spaces

Woodmark^{AMERICAN}PRO[®]



Leesburg[®] Maple Cognac shown with 5-Piece Drawer Front

Inspirational Spaces

Woodmark^{AMERICAN}PRO[®]



Ashland[®] Painted Harbor

Inspirational Spaces

Woodmark^{AMERICAN}PRO[®]



Reading[®] Maple Truffle

Inspirational Spaces

Woodmark^{AMERICAN}PRO[®]



Brookland[®] Painted Pewter Glaze

Inspirational Spaces

Woodmark^{AMERICAN}PRO[®]



Shorebrook[®] Duraform[®] Linen



Brookland[®] Painted Silk

Inspirational Spaces

Woodmark^{AMERICAN}PRO[®]



MacArthur[®] Painted Ember Glaze accented with Cherry Java

Inspirational Spaces

Woodmark^{AMERICAN}PRO[®]



Inspirational Spaces

Woodmark^{AMERICAN}PRO[®]



Shorebrook[®] Duraform[®] Linen

Inspirational Spaces

Woodmark^{AMERICAN}PRO[®]



Shorebrook[®] Maple Truffle